
**"BRAND QUALITY
WITHOUT THE
BRAND!"**

A photograph of three models (a woman on the left, a young boy in the center, and a young man on the right) wearing dark blue and red sports tracksuits. The tracksuits feature a red crest on the chest and the words "Sports Club" below it. They are standing in front of a green net, possibly a soccer goal. The background is a blurred outdoor setting with greenery.

**PERFORMANCE
TRAINING AND
TEAMWEAR**



training wear

CONTENTS

Brand quality	4	672	Budget training top	31	
Fit for purpose	6	391	Pro training top	32	
Quality assurance - step by step	7	270	Softshell team jacket	34	
Fit for you	8	0059	Waterproof quarter zip jacket	35	
Oekotex standard 100 & ITS Intertek	10	355	Elite showerproof jacket	36	
Ethical & social responsibilities	11	784	Contoured thermal jacket	38	
787	Technical tee	12	827	Contoured bench coat	40
660	Pro training tee	13	826	Skinny pant	41
425	Technical polo	14	211	Classic stadium pant	42
785	Premium polo	15	704	Women's fit stadium pant	43
284	All purpose baselayer	16	467	All purpose micro pant	44
401	Baselayer tights	18	530	Elite showerproof pant	45
382	Baselayer shorts	20	801/804	iGen female polo and skort	46
790	Functional midlayer	22	806/803	iGen unisex polo and short	48
812	Pro team midlayer	23	718	Premium squad kit bag	50
650	Premium pro hoody	24	824	Matchday holdall	51
269	Club hoody	26	258	Presentation tracksuit	52
799	Women's power stretch legging	27	466	Club micro tracksuit	53
671/P	Pro training short	28		Size guide	54
535	Pro rugby short	29		Technical performance guide	55
543	Team skort	30			

brand
quality

**"A GENUINE PREMIUM
QUALITY ALTERNATIVE
TO MAJOR SPORTS
BRANDS"**

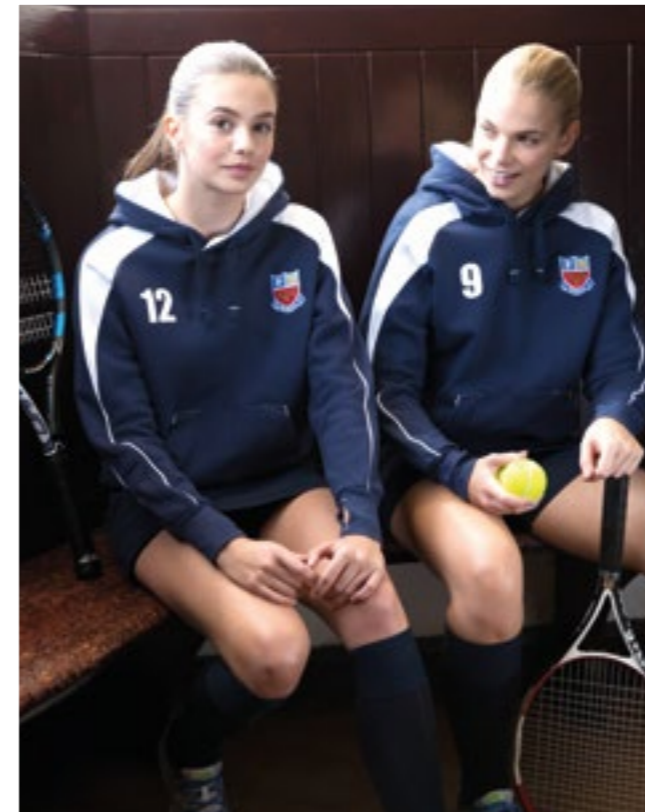


BRAND QUALITY WITHOUT THE BRAND

This fully coordinated, UK-supplied, "stock-supported" multisport range has been designed and developed by a proven and highly experienced UK-based team of sportswear fabric and garment specialists. Specifically, it offers brands and resellers a credible premium quality alternative to high profile teamsport brands.

These days, the demands of teamsport and training, whether at senior professional level or grass roots juniors, means that sportswear garments are fit for purpose in every way. Frequent wash and wear, combined with an increasingly knowledgeable consumer, means that garments are simply expected to perform, look great and last longer and, needless to say, offer value.

It is also important not to underestimate the increasing desire within recreational and educational teamsport, (and also corporate sector and individuals) to look smart, stylish and professional when representing their team or organisation, at the same time projecting the right image. It could be for a world tour, a local cup final or simply a PE coach visiting another school – people notice.



FIT FOR PURPOSE

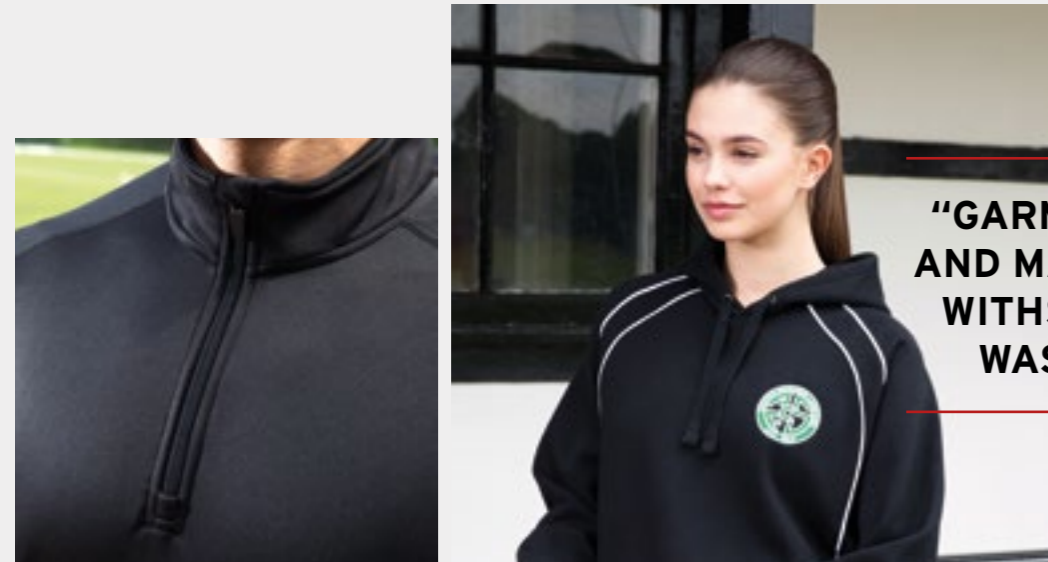
All too often, many less-experienced manufacturers and importers overlook the importance of controlling garment quality to the necessary level at key production stages, whether it be technical fabric performance, stitching or the durability of a critical trim. A proven quality procedure is integral to manufacturing suitable garments which fit and function according to their intended use, giving "the buyer" confidence in the product.

Designed and developed in the UK, this range is manufactured by hand-picked specialist partners, and quality is rigorously controlled at all stages. The highly detailed specifications of the garments pay particular attention to reinforcing them in the right places and specifying the most suitable fabrics to reduce the risk of unwanted returns.

Whilst all the approved factories have in-house quality procedures to international standards, the quality assurance team for these products is not employed by the manufacturer. They are dedicated and experienced full-time staff working exclusively on this range, trained to understand the small but important details that make the difference in a garment.

Manufacturers are chosen on their proven ability to produce specific product types, which enables them to offer valuable input when developing new products.

To give you an idea why these products are genuinely "fit for purpose," please study the step-by-step quality assurance flow chart on page 7, which highlights the rigorous procedure undertaken to control quality at every stage.



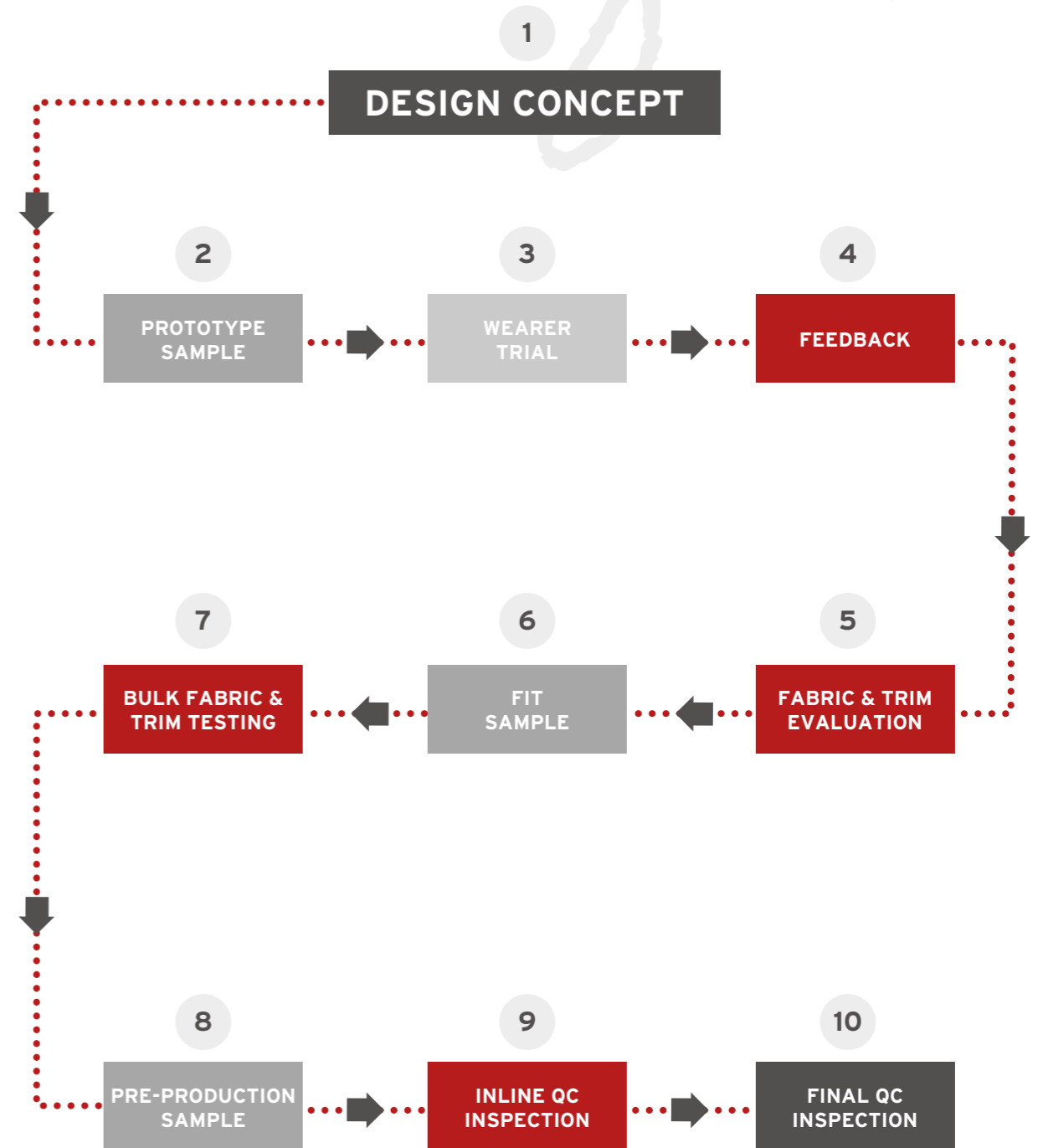
"GARMENTS DESIGNED AND MANUFACTURED TO WITHSTAND REGULAR WASH AND WEAR"



"Brand quality without the brand"



QUALITY ASSURANCE STEP BY STEP



FIT FOR YOU

A collection of premium quality products ideally suited for all multisport and specialist team brands, embroiderers, printers and resellers – school outfitters and sport retailers, corporate and eventwear.

TRIED AND TESTED

All garments are manufactured to a proven standard and offer a credible alternative to top brands. Existing users include all levels of professional and amateur sports men and women, and it is also an ideal performance range for the educational sector.

RANGE LONGEVITY

Clubs, teams and schools need reliable continuity for their clothing. This range enables you to offer continuity, season on season, in the same styles for all ages.

STOCK SUPPORTED

A fast, efficient, UK-based stock service, offering a full range of sizes from age 6 to XXXL all year round.

PRODUCT DEVELOPMENT

By analysing a wide range of key products and working closely with a variety of brands, a minimum of 3 new products are introduced to the range each season to offer greater choice when coordinating your clothing.

HIGH QUALITY IMAGES

A large number of detailed CAD and photographic images are available on request to assist you with online sales or brochure development.

LAYERING SYSTEM

Increasingly used by numerous technical brands, carefully designed underwear and next to the skin/ mid layer garments combine with water repellent and weatherproof outershells to keep the wearer warm, dry and comfortable in changeable weather conditions.

**"A MULTISPORT
RANGE FOR BOTH
PROFESSIONAL AND
GRASSROOTS TEAMS"**

tried & tested

OEKOTEX STANDARD 100



The Oekotex standard is an independent, international testing and certification system for textile raw materials, intermediate and end textile products at all stages of production – such as yarns, raw and dyed fabrics and knits, ready made clothing, domestic textiles.

CRITERIA

Testing for harmful substances includes:

- Illegal substances
- Legally regulated substances
- Known harmful chemicals (unregulated)
- Parameters of healthcare

In their entirety, the overall requirements of oekotex exceed existing legislation.

The oekotex criteria helps highlight the additional benefits of safety tested textiles. Please note that not all trims and components in these garments carry the oekotex standard. However, any such trims and components are tested in accordance with oekotex whenever possible as part of an ongoing commitment to improving both environmental and ethical practices throughout the supply chain.

ITS INTERTEK



In a competitive garment industry full of complex regulations, it is imperative for manufacturers, retailers, importers and distributors to proactively evaluate fabrics and trims to ensure they are producing the highest quality apparel, from the first stitch, for demanding consumers. By ensuring fabric quality from the start, the result is more durable apparel that stands the test of time.

The fabric and trims utilised in this range are tested exclusively by Intertek to international standards.

Intertek is a leading quality solutions provider to industries worldwide. From auditing and inspection, to testing, training, advisory, quality assurance and certification, Intertek adds value for its customers by helping improve the quality and safety of their products, assets and processes. With a network of more than 1,000 laboratories and offices and over 38,000 people in more than 100 countries, Intertek supports companies' success in the global marketplace, by helping customers to meet end users' expectations for safety, sustainability, performance, integrity and desirability in virtually any market worldwide. For more information, visit www.intertek.com.

SOME OF THE ESSENTIAL TESTS INTERTEK PERFORMS ON FABRIC INCLUDE THE FOLLOWING:

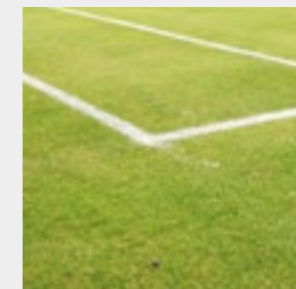
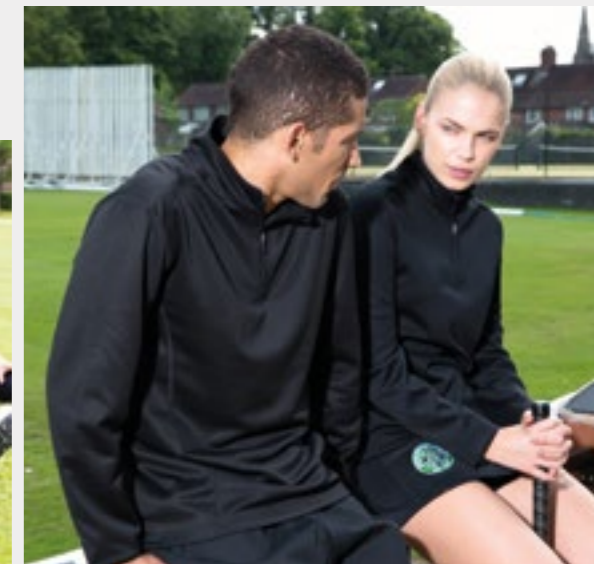
- Staining - colourfastness to washing
- Tear strength
- Pilling/snagging resistance
- Wet/dry rub fastness
- Dimensional stability (shrinkage to washing)
- Spirality
- Seam strength (as required)
- Stretch and recovery

ETHICAL & SOCIAL RESPONSIBILITIES

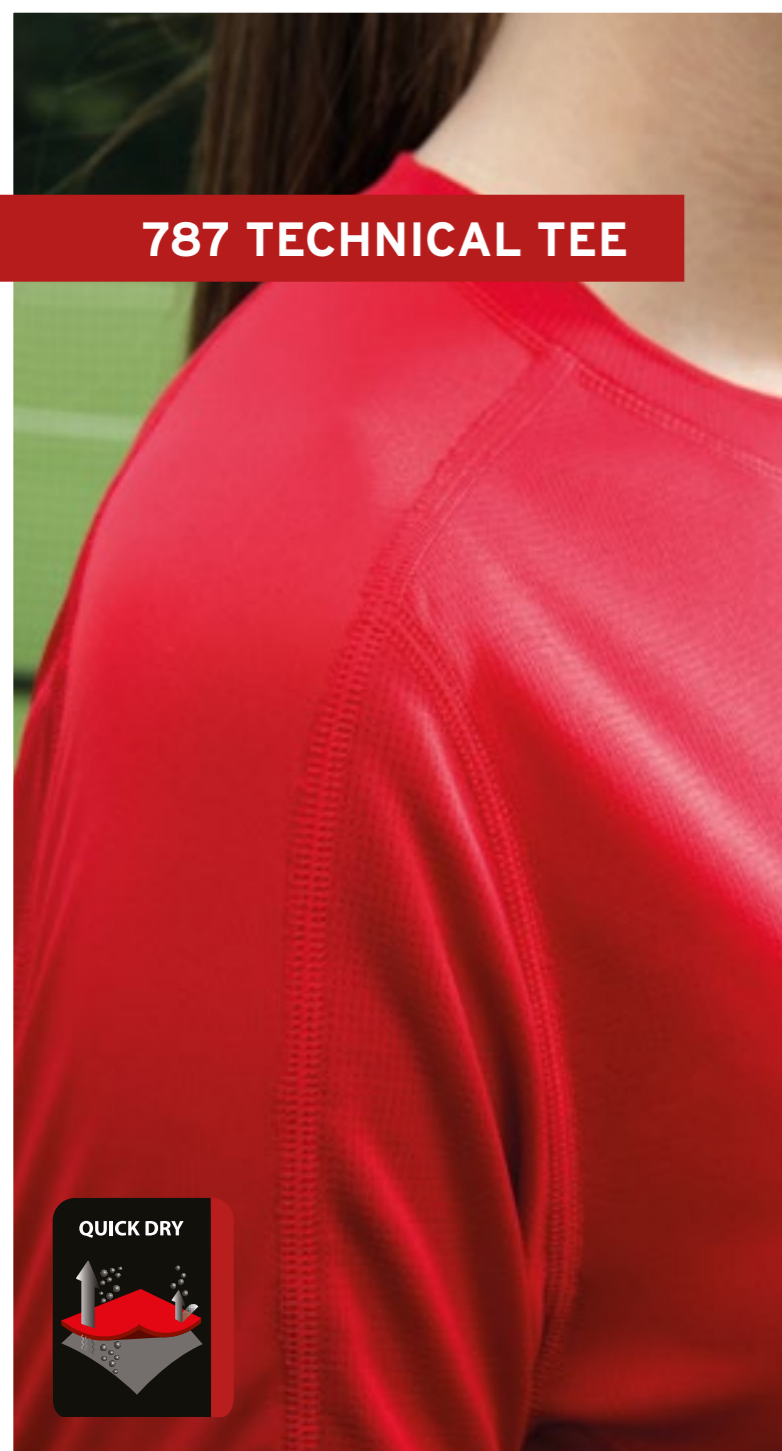
All manufacturers associated with the production of these products subscribe to a range of recognised ethical trading initiatives, such as bureau veritas, BSCI (business social compliance initiative) or sedex (supplier ethical data exchange) - and recognise their social and corporate responsibilities to their employees, buyers and end users. Garments are produced and delivered under conditions that do not abuse or exploit any persons or the environment.

These considerations form part of any evaluation and selection criteria for this range. In order to support and maintain such responsibilities, all manufacturers are visited on a regular basis. This also helps to ensure that all employers within the factories are able to meet the key principles relating to working hours, forced labour, and the overall working environment, including accommodation.

“INDEPENDENTLY TESTED TO RECOGNISED INTERNATIONAL STANDARDS”



787 TECHNICAL TEE



660 PRO TRAINING TEE



NEED TO KNOW

An active fit performance t-shirt using premium quality ultra soft 145gsm micro fabric with contrast panel, offering the wearer a technical light weight option. An additional moisture management function keeps the wearer cool and dry, comfortable four thread flat lock stitching, and no itchy sew in care labels all add to its appeal. This is a genuine performance garment.



FABRIC SYMBOLS



AVAILABILITY:

AVAILABLE COLOURS	WHITE / BLACK / ROYAL / NAVY / RED										
INTERNATIONAL SIZE YEARS	SY 8/9	MY 10/11	LY 12/13	XLY	S	M	L	XL	XXL	XXXL	

NEED TO KNOW

Active fit performance t-shirt in a 145gsm flat knit micro fabric with subtle pinhole effect micro fabric contrast. It's exceptionally comfortable for the wearer, with clever finishing touches around the collar and shoulder areas creating an all round great design for any team.



FABRIC SYMBOLS



AVAILABILITY:

AVAILABLE COLOURS	BLACK/RED BLACK/EMERALD BLACK/AMBER BLACK/WHITE NAVY/WHITE NAVY/SKY NAVY/RED										
INTERNATIONAL SIZE YEARS	XSY 6/7	SY 8/9	MY 10/11	LY 12/13	XLY	S	M	L	XL	XXL	XXXL

NEW JUNIOR SIZES AVAILABLE FROM JAN 2017*

425 TECHNICAL POLO



785 PREMIUM POLO



NEED TO KNOW

150gsm soft handle microknit fabric with pinhole effect and silver contrast thread. This versatile garment is equally suitable for teamsport or corporate wear. A soft touch rib collar trim ensures next to the skin comfort.



FABRIC SYMBOLS



AVAILABILITY:

AVAILABLE COLOURS	WHITE / BLACK / ROYAL / NAVY / RED							
INTERNATIONAL SIZE YEARS	LY 12/13	XLY	S	M	L	XL	XXL	XXXL

NEED TO KNOW

Coordinated and designed to compliment the full range, this premium polo uses a 180gsm polyester pique knit fabric with moisture management, specifically developed for this garment. Subtle design touches such as contrast colour stitch and fabric details, two tone placket and side slits, create a unique-looking garment fit for any team who want something different.

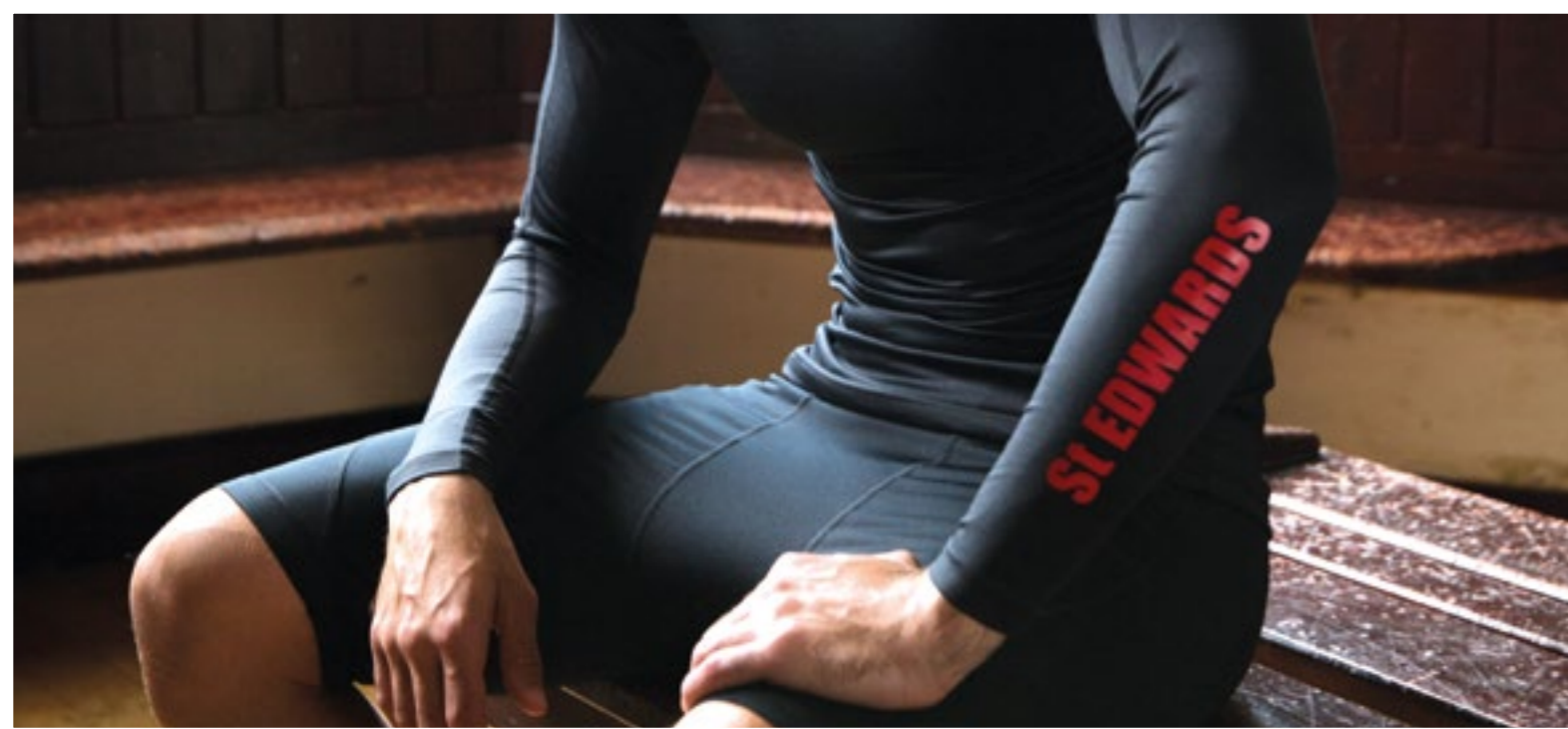
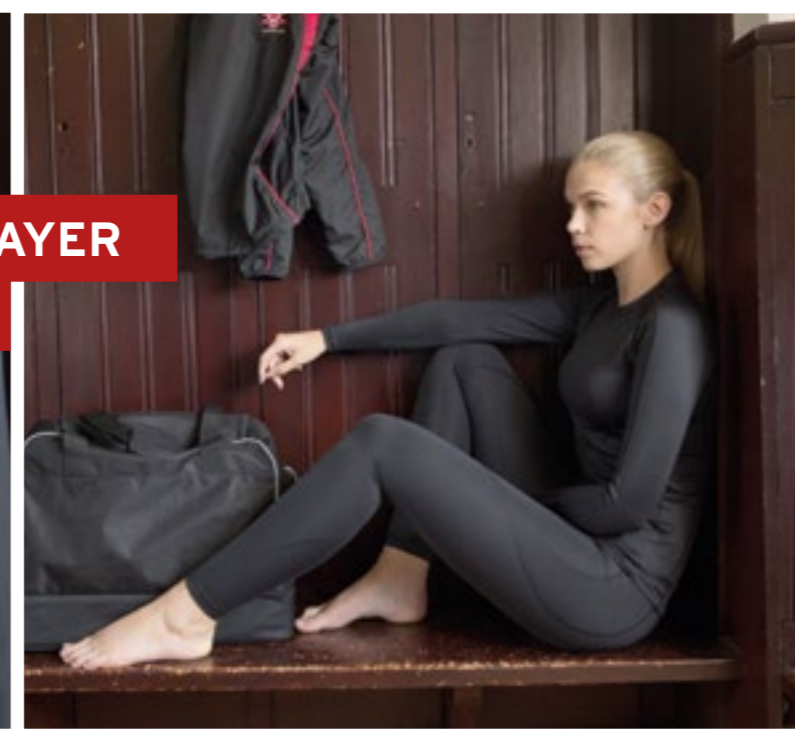
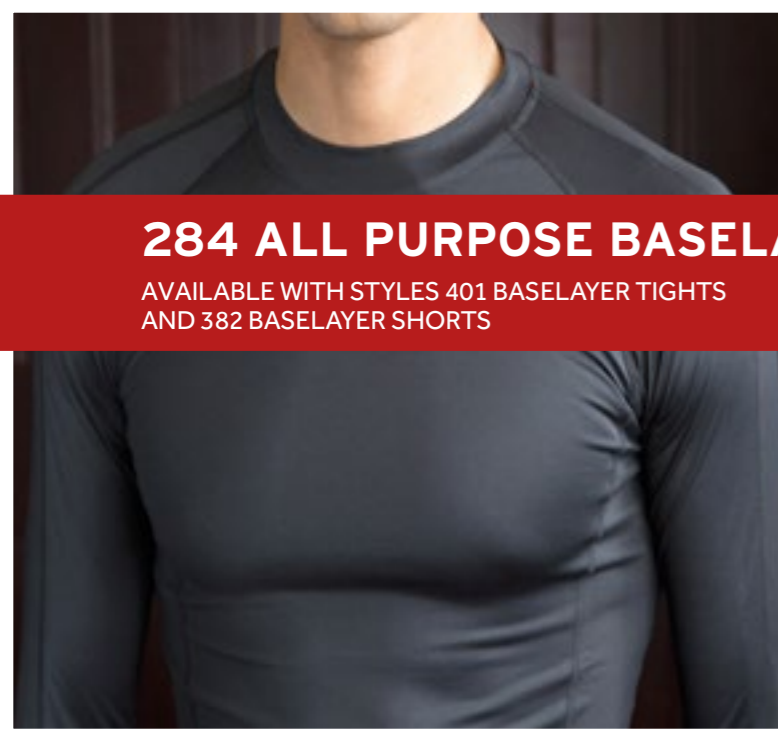


FABRIC SYMBOLS



AVAILABILITY:

AVAILABLE COLOURS	BLACK/EMERALD BLACK/RED BLACK/AMBER BLACK/WHITE NAVY/WHITE NAVY/SKY NAVY/RED							
INTERNATIONAL SIZE YEARS	LY 12/13	XLY	S	M	L	XL	XXL	XXXL



284 ALL PURPOSE BASELAYER

AVAILABLE WITH STYLES 401 BASELAYER TIGHTS AND 382 BASELAYER SHORTS

NEED TO KNOW

This best-selling garment is perfect for all ages. It's the ideal all purpose undergarment, fast becoming a "must have" product for many schools as part of their games kit. Using 250gsm power stretch fabric with moisture management and technical design, it still hasn't lost any of its appeal to professional sports men and women either. Strong 4 thread flatlock seams make this very comfortable to wear, and the 8% spandex stretch content means it's very close fit and streamline, enhancing wearer performance all round.



FABRIC SYMBOLS



THERMAL BALANCE



MOISTURE CONTROL



WARMTH



EASY CARE

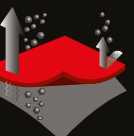
AVAILABILITY:

AVAILABLE COLOURS	WHITE / BLACK / ROYAL / NAVY / RED									
INTERNATIONAL SIZE YEARS	SY 8/9	MY 10/11	LY 12/13	XLY	S	M	L	XL	XXL	XXXL

401 BASELAYER TIGHTS

AVAILABLE WITH STYLE 284 BASELAYER TOP

QUICK DRY



Soft brushed stretch waistband for real comfort

Highly durable fabric for regular wash and wear

NEED TO KNOW

Another "must have" garment as part of the school team games kit for year round wear in all sports. The power stretch fabric (8% spandex) comes into its own and allows the garment to be removed quickly and easily over boots and studs in match situations.

FABRIC SYMBOLS



THERMAL BALANCE MOISTURE CONTROL WARMTH EASY CARE

AVAILABILITY:

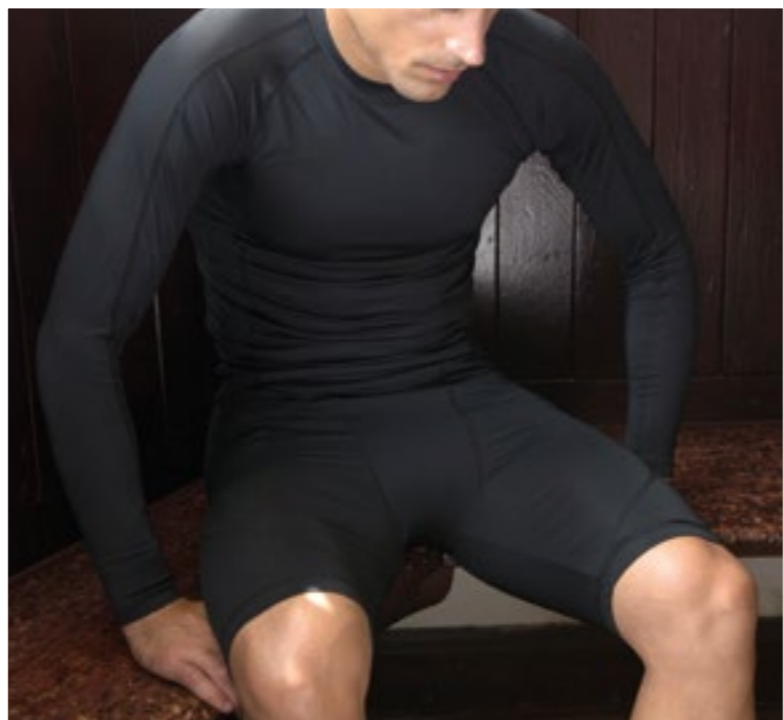
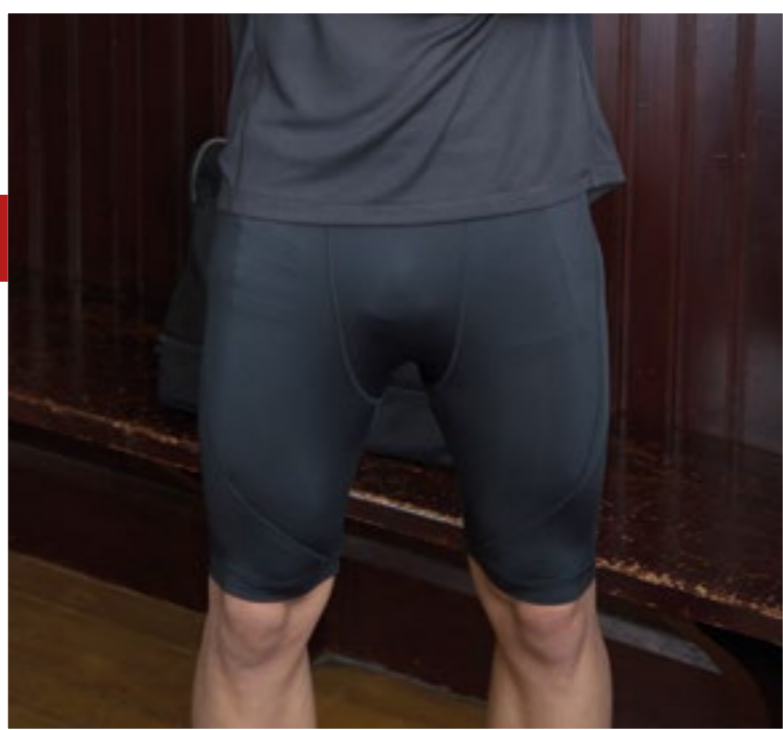
AVAILABLE COLOURS	WHITE / BLACK / NAVY									
INTERNATIONAL SIZE YEARS	SY 8/9	MY 10/11	LY 12/13	XLY	S	M	L	XL	XXL	XXXL





382 BASELAYER SHORTS

AVAILABLE WITH STYLE 284 BASELAYER TOP



Powerstretch fabric with moisture control and technical design

Close fit and flatlock seams for added wearer comfort

NEED TO KNOW

Using the same fabric and sewing techniques as the 284 baselayer, the short can be worn in conjunction with the top, popular with many team sport players as well as individual sports men and women. Tight fit but allows 100% mobility and very comfortable to wear.



FABRIC SYMBOLS



AVAILABILITY:

AVAILABLE COLOURS	WHITE / BLACK / ROYAL / NAVY / RED										
INTERNATIONAL SIZE YEARS	SY 8/9	MY 10/11	LY 12/13	XLY	S	M	L	XL	XXL	XXXL	

790 FUNCTIONAL MIDLAYER



812 PRO TEAM MIDLAYER



NEED TO KNOW

Originally a concept exclusive to alpine sports, "layering" is now an increasingly common term when choosing more conventional sportswear and teamwear. Consisting of a "next to the skin" garment followed by a warmer mid layer and waterproof outer shell to keep you dry, it enables the wearer to adjust to changing body temperature and the onset of perspiration. This simply-designed zip top, made from matt finish, 100% polyester, 220gsm knit with a soft anti pill fleece reverse, is a modern alternative to more traditional fleece garments and hoodies.



FABRIC SYMBOLS



AVAILABILITY:

AVAILABLE COLOURS	BLACK / NAVY										
INTERNATIONAL SIZE YEARS	XSY 6/7	SY 8/9	MY 10/11	LY 12/13	XLY	S	M	L	XL	XXL	XXXL

NEED TO KNOW

"A premium multicolour alternative to the bestselling 790 midlayer (page 22) available in a wide range of team shades – This multisport product offers a modern, fresh and considerably more technical alternative to a traditional hoody or fleece. Using the same tried and tested matt finish, 100% polyester, 220 gsm knit fabric with anti pill microfleece reverse, this 2 in 1 fabric represents the future of teamsport garments and is fast becoming a "must have" product at both club and school level.



FABRIC SYMBOLS



AVAILABILITY:

AVAILABLE COLOURS	BLACK/RED BLACK/EMERALD BLACK/AMBER BLACK/WHITE NAVY/WHITE NAVY/SKY NAVY/RED										
INTERNATIONAL SIZE YEARS	XSY 6/7	SY 8/9	MY 10/11	LY 12/13	XLY	S	M	L	XL	XXL	XXXL

650 PREMIUM PRO HOODY



Multiple garment features include thumb loops and iPod pocket

Premium quality cotton rich fabric

NEED TO KNOW

A bestseller with a wealth of features - multicoloured panels, chunky drawstring, iPod pocket, thumb loops, contract stitch detail and double thickness hood - this top is very desirable on and off the pitch. Using a similar heavyweight 80/20% cotton rich fabric as the classic hoody, it's a genuine "premium" product carefully designed to be slightly more fitted than standard hoodies, it's very popular with a wide variety of teamsport and corporate end users.



FABRIC SYMBOLS



WARMTH



EASY CARE

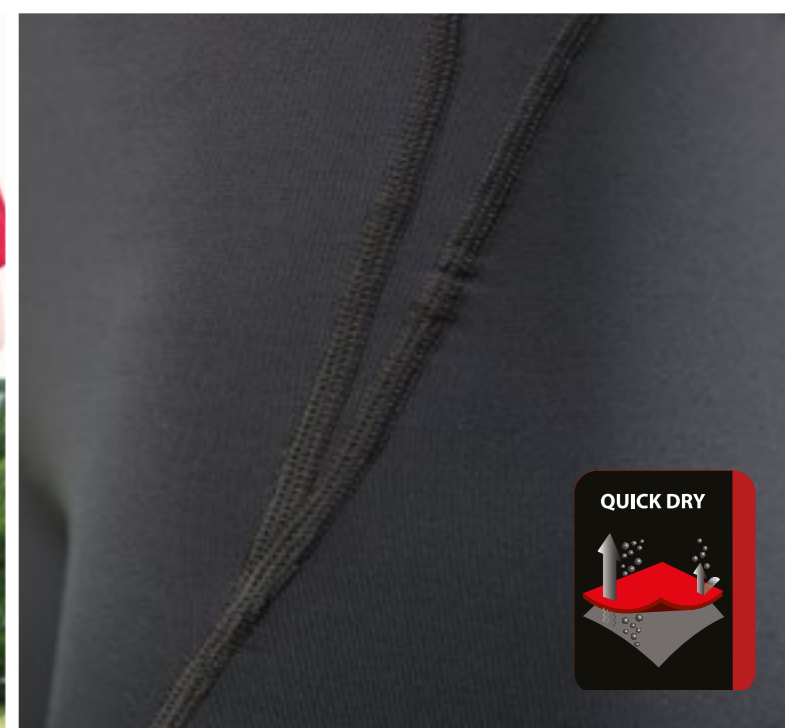
AVAILABILITY:

AVAILABLE COLOURS	BLACK/RED BLACK/EMERALD BLACK/AMBER BLACK/WHITE NAVY/WHITE NAVY/SKY NAVY/RED									
INTERNATIONAL SIZE YEARS	SY 8/9	MY 10/11	LY 12/13	XLY	S	M	L	XL	XXL	XXXL

269 CLUB HOODY



799 WOMEN'S POWER-STRETCH LEGGING



NEED TO KNOW

Heavyweight 350gsm cotton rich fabric (70% cotton/ 30% polyester) means this hoody is really superb quality, and far warmer than more typical budget hoodies. Includes a classic patch front pocket and a soft jersey lined hood. It's a generous fit and coordinates well with the other products in the range.



FABRIC SYMBOLS



AVAILABILITY:

AVAILABLE COLOURS	BLACK / NAVY										
INTERNATIONAL SIZE YEARS	XSY 6/7	SY 8/9	MY 10/11	LY 12/13	XLY	S	M	L	XL	XXL	XXXL

NEED TO KNOW

This ultra comfortable fitted pant is a perfect fit for a multitude of individual and teamsports uses, and offers a great alternative to base layer tights. Specially developed 240gsm polyester/nylon/spandex fabric with soft looped back reverse, contoured flatlock seams and feminine waistband. They are incredibly comfortable, fast becoming a must have product for sportswomen and girls of all ages.

FABRIC SYMBOLS



AVAILABLE IN SIZES:

AVAILABLE COLOURS	BLACK / NAVY								
INTERNATIONAL SIZE	6/7Y	8/9Y	10/11Y	12/13Y	6-8	10-12	14	16	18



671/P PRO TRAINING SHORT



NEED TO KNOW

Quick drying, lightweight 110gsm polyester spandex, 4 way stretch fabric with neat contrast panelling make this a great multisport product. The simple design, sitting just above the knee with side pockets looks great if worn in conjunction with a tech tee, hoody or jacket when training or playing for real.



AVAILABILITY:

AVAILABLE COLOURS	WHITE / BLACK / NAVY									
INTERNATIONAL SIZE YEARS	SY 8/9	MY 10/11	LY 12/13	XLY	S	M	L	XL	XXL	XXXL
	NO POCKETS			WITH POCKETS						

FABRIC SYMBOLS



MOISTURE CONTROL LIGHTWEIGHT EASY CARE

535 PRO RUGBY SHORT



NEED TO KNOW

A best-selling product, this fully reinforced, technical and highly engineered rugby short is suitable for the highest level, both professional, amateur club and school rugby. The main body fabric is 240gsm high tenacity 100% polyester twill and is highly durable. Powerstretch fabric panelling gives added mobility and additional seam reinforcements making it fully fit for purpose. It also has an internal gumshield pocket and an elasticated gripper waistband with drawcord.



FABRIC SYMBOLS



REINFORCED EASY CARE

AVAILABILITY:

AVAILABLE COLOURS	WHITE / BLACK / NAVY										
INTERNATIONAL SIZE YEARS	XSY 6/7	SY 8/9	MY 10/11	LY 12/13	XLY	S	M	L	XL	XXL	XXXL

543 TEAM SKORT



NEED TO KNOW

The pro skort is a simple but feminine design, with a flat fronted waistband, it looks smart and will withstand frequent wash and wear. Using a heavier 250gsm powerstretch polyester with spandex for the outer skirt and a lighter 200gsm version for the internal short, it is designed for mobility. The inner short uses 4 thread flatlock stitching in key areas, which combined with moisture control offers both strength and maximum comfort.

FABRIC SYMBOLS



EASY CARE



MOISTURE CONTROL

AVAILABILITY:

AVAILABLE COLOURS	BLACK / NAVY												
INTERNATIONAL SIZE	5-6Y	7-8Y	9-10Y	11-12Y	13-14Y	6	8	10	12	14	16		



672 BUDGET TRAINING TOP



NEED TO KNOW

A simple lightweight mesh lined v neck training top for non contact use. 100% nylon full dull high density 70gsm fabric with a touch of piping detail makes this a good product for those on a budget - a showerproof finish means that it's still functional, and ideal if combined with a mid layer.

FABRIC SYMBOLS



LIGHTWEIGHT



SHOWERPROOF



EASY CARE



AVAILABILITY:

AVAILABLE COLOURS	BLACK / NAVY										
INTERNATIONAL SIZE YEARS	SY 8/9	MY 10/11	LY 12/13	XLY	S	M	L	XL	XXL	XXXL	

391 PRO TRAINING TOP

AVAILABLE WITH STYLE 530 ELITE PANTS



NEED TO KNOW

Designed and developed for contact sports, stylish feature panelling and reinforced in all the right places. This is a key product in the range, lightweight and strong with showerproof 100% polyester 105gsm dobby effect pu coated fabric - other features include soft brushed mesh lining, internal zip for embellishment, bound cuffs and hem, plus an adjustable toggle at the waist.



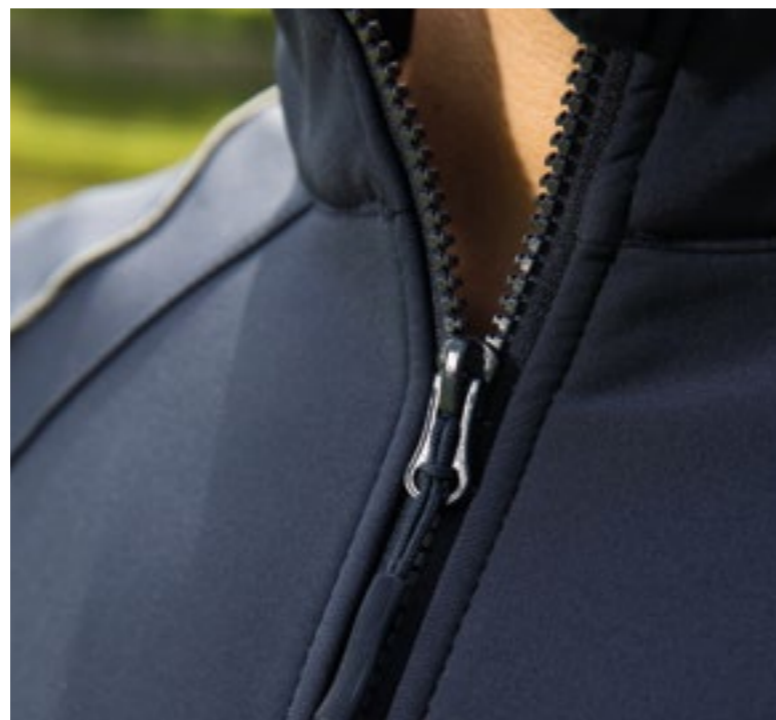
FABRIC SYMBOLS



AVAILABILITY:

AVAILABLE COLOURS	BLACK/RED	BLACK/EMERALD	BLACK/AMBER	BLACK/GREY	BLACK/WHITE	ROYAL/YELLOW	ROYAL/WHITE	NAVY/WHITE	NAVY/SKY	NAVY/RED	
INTERNATIONAL SIZE YEARS	XSY 6/7	SY 8/9	MY 10/11	LY 12/13	XLY	S	M	L	XL	XXL	XXXL

270 SOFTSHELL TEAM JACKET



0059 WATERPROOF QUARTER ZIP JACKET



NEED TO KNOW

A highly-functional and stylish jacket, equally in demand for corporatewear as well as teamwear. A 290gsm 3 layer breathable soft shell fabric with anti pill fleece reverse will keep you warm and dry. Particularly popular for tours and coaching staff, the jacket has numerous features such as a chin guard, adjustable velcro cuffs, a drop back hem, plus a clever drawstring system concealed in the pockets - contoured reflective piping adds a finishing touch.



FABRIC SYMBOLS



AVAILABILITY:

AVAILABLE COLOURS	BLACK / NAVY								
INTERNATIONAL SIZE YEARS	LY 12/13	XLY	S	M	L	XL	XXL	XXXL	

NEED TO KNOW

Robust but lightweight 100% polyester pu ripstop 105gsm outer shell with soft mesh lining - this garment is taped seamed, fully waterproof and breathable (mvt 3000 mm/24hr). It also has a neatly concealed hood for extra protection against the worst weather. Simple styling and bound cuffs mean it's ideal for all weather training or general purpose. Other features include concealed drawstring, internal access zip and a chinguard.



FABRIC SYMBOLS



AVAILABILITY:

AVAILABLE COLOURS	BLACK / NAVY												
INTERNATIONAL SIZE YEARS	XSY 6/7	SY 8/9	MY 10/11	LY 12/13	XLY	S	M	L	XL	XXL	XXXL		

355 ELITE SHOWERPROOF JACKET

AVAILABLE WITH STYLE 530 ELITE PANTS



Durable water repellent polyester doobby fabric



Features include access zip, concealed drawstring, and chinguard

NEED TO KNOW

This fully showerproof multi purpose jacket, mesh lined with inner pocket and access zip uses the same 105gsm lightweight 100% polyester doobby effect pu coated fabric as the style 391 training top and 530 pro training pants meaning you can mix and match to make a suit. Standard jacket features are concealed drawstring, drop back hem, chin guard, elasticated cuffs and a neatly concealed hood.



FABRIC SYMBOLS



LIGHTWEIGHT SHOWERPROOF EASY CARE ACCESS ZIP

AVAILABILITY:

AVAILABLE COLOURS	BLACK	BLACK/RED	BLACK/EMERALD	BLACK/AMBER							
	NAVY	NAVY/WHITE	NAVY/SKY	NAVY/RED	BLACK/NAVY						
INTERNATIONAL SIZE YEARS	XS	SY	MY	LY	XLY	S	M	L	XL	XXL	XXXL
	6/7	8/9	10/11	12/13							

784 CONTOURED THERMAL JACKET



140gsm thermal wadded lining for the coldest weather



Fully washable textured outer fabric

NEED TO KNOW

A stylish ultra warm team coat. Water repellent 100% textured polyester 105gsm outer fabric combined with high loft 140gsm thermal wadding, it's extremely warm for the coldest weather. This garment offers something different to more typical touchline or managers jackets with a host of features such as internal powerstretch cuffs, 2 access zips for embroidery, internal pocket and a gathered internal lining to enhance overall fit.



FABRIC SYMBOLS



WARMTH SHOWERPROOF EASY CARE ACCESS ZIP

AVAILABILITY:

AVAILABLE COLOURS	BLACK / NAVY									
INTERNATIONAL SIZE YEARS	SY 8/9	MY 10/11	LY 12/13	XLY	S	M	L	XL	XXL	XXXL

827 CONTOURED BENCH COAT



826 SKINNY PANT



NEED TO KNOW

"A full length, extended version of style 784 contoured jacket (page 38), keeping your whole body warm wether your stood around on winter training pitches or waiting for your moment off the bench on a matchday, you need to hit the ground running. This coat is irreplaceable. Not only is it fully functional with deep pockets, with high loft thermal wadding and water repellent 100% polyester textured fabric, but it has to be one of the most stylish sub coats on the market, not to mention the comfortable fitted powerstretch cuffs sealing in valuable heat.



FABRIC SYMBOLS



AVAILABILITY:

AVAILABLE COLOURS	BLACK / NAVY				
INTERNATIONAL SIZE YEARS	MY/LY 10/11 - 12/13	XLY/S	M/L	XL/XXL	

NEED TO KNOW

A new generation training pant/tracksuit bottom. These modern and functional tapered bottoms offer a comfortable, practical and more fitted option to classic open hemmed pants. Designed to fit the body form using carefully designed contrast stretch panelling, this product also benefits from subtle design features, lightweight zips on the pocket and the ankles. The 210 gsm "full dull" super soft polyester knit fabric gives them a luxurious feel and superior appearance even when compared to similar premium brand alternatives.



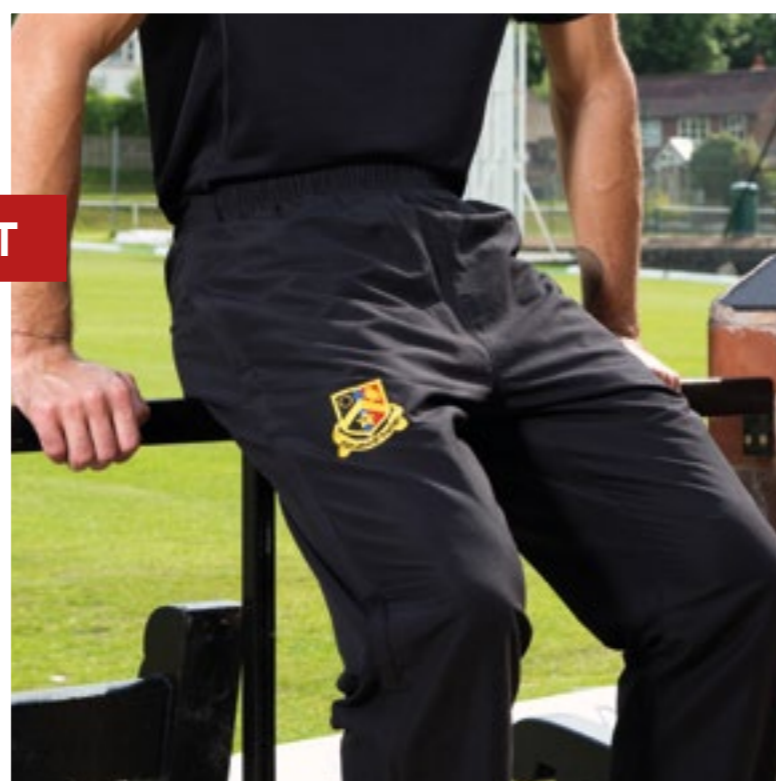
FABRIC SYMBOLS



AVAILABILITY:

AVAILABLE COLOURS	BLACK / NAVY										
INTERNATIONAL SIZE YEARS	XSY 6/7	SY 8/9	MY 10/11	LY 12/13	XLY	S	M	L	XL	XXL	XXXL

211 CLASSIC STADIUM PANT



704 WOMEN'S FIT STADIUM PANT



NEED TO KNOW

Fully reinforced, in a 135gsm high density full dull polyester taslan, this pant is popular for contact training as well as general use due to its classic design. The soft jersey lining is very comfortable, plus the garment also benefits from a 3/4 length heavy duty leg zip. It's very practical as well, and a showerproof finish, concealed adjustable toggle and drawstring complete this popular product.

FABRIC SYMBOLS



AVAILABILITY:

AVAILABLE COLOURS	BLACK / NAVY									
INTERNATIONAL SIZE YEARS	SY 8/9	MY 10/11	LY 12/13	XLY	S	M	L	XL	XXL	XXXL



NEED TO KNOW

A women's version of the 211 stadium pant, 135gsm high density full dull polyester and soft jersey lining. A slimmer fit in the leg and a flatter more feminine waistband should make this an integral part of ladies team kit. It works well with hoodies and tees or over the top of a skirt, and the extended 3/4 length side zip makes it a perfect club or team garment.

FABRIC SYMBOLS



AVAILABLE IN SIZES:

AVAILABLE COLOURS	BLACK / NAVY								
INTERNATIONAL SIZE	11-12Y	13-14Y	6	8	10	12	14	16	





467 ALL PURPOSE MICRO PANT



530 ELITE SHOWERPROOF PANT

AVAILABLE WITH STYLE 391 PRO TRAINING TOP AND 355 ELITE JACKET



NEED TO KNOW

A simple no-fuss budget style, including showerproof 125gsm polyester micro peach fabric and lightweight mesh lining with ankle zips and open hem. A popular style with schools and teams on a budget, it is constructed to last for a wide variety of end uses.

FABRIC SYMBOLS



EASY CARE SHOWERPROOF

AVAILABILITY:

AVAILABLE COLOURS	BLACK / NAVY										
INTERNATIONAL SIZE YEARS	XSY 6/7	SY 8/9	MY 10/11	LY 12/13	XLY	S	M	L	XL	XXL	XXXL



NEED TO KNOW

Fully lined with soft knitted jersey for added comfort, and with a highly functional 3/4 length leg zips to the side for quick access, this pant is perfect for training or travel. 105gsm lightweight polyester with dobby effect pu coated fabric - a concealed adjustable toggle in the ankle and drawstring waistband along with inventive panel details ensures an active fit.

FABRIC SYMBOLS

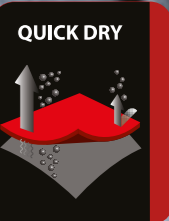


LIGHTWEIGHT SHOWERPROOF REINFORCED EASY CARE

AVAILABLE IN SIZES:

AVAILABLE COLOURS	BLACK / NAVY										
INTERNATIONAL SIZE YEARS	XSY 6/7	SY 8/9	MY 10/11	LY 12/13	XLY	S	M	L	XL	XXL	XXXL





iGEN GAMES KIT

MIX & MATCH
801 TEAM FEMALE POLO
804 TEAM SKORT

NEED TO KNOW

A fresh new look for school sport, PE or club – this specially designed female fit polo and skort combination, available individually or as a set, offers something new combining the latest performance quick dry fabric and high quality garment construction. The 180 gsm ultra soft microdot polyester fabric appeals to those looking for improved garment performance whilst ensuring a high level of durability. Subtle design features set it apart from more traditional teamsport ranges and forms part of a more comprehensive selection of similar unisex products (see pages 48/49 for unisex shorts and unisex polo).



FABRIC SYMBOLS



801 TEAM FEMALE POLO - AVAILABILITY:

AVAILABLE COLOURS		BLACK BLACK/RED BLACK/EMERALD BLACK/AMBER BLACK/WHITE BLACK/PURPLE BLACK/SKY NAVY NAVY/AMBER NAVY/WHITE NAVY/SKY NAVY/RED										
LABEL SIZE (INCHES)		20/22	24/26	26/28	28/30	30/32	32/34	34/36	36/38	40/42	42/44	44/46
CHEST	INCHES (TO FIT)	22	25	26	28	30	32	34	37	40	42	45
	CENTIMETRES (TO FIT)	56	62	66	71	76	81	86	94	102	106	114

804 TEAM SKORT - AVAILABILITY:

AVAILABLE COLOURS		BLACK/RED BLACK/EMERALD BLACK/AMBER BLACK/WHITE BLACK/PURPLE BLACK/SKY NAVY/AMBER NAVY/WHITE NAVY/SKY NAVY/RED									
LABEL SIZE (INCHES)		21	22	23	24	25	26	27	28	30	32
WAIST	INCHES (TO FIT)	21	22	23	24	25	26	27	28	30	32
	CENTIMETRES (TO FIT)	53	56	58	61	64	66	69	71	76	81
LENGTH	INCHES (TO FIT)	10	10	11	12	13	13	14	14	15	15
	CENTIMETRES (TO FIT)	25	26.5	28	30	32	34	35	36	37	38



iGEN GAMES KIT

MIX & MATCH
806 UNISEX POLO
803 TEAM SHORT

NEED TO KNOW

Forming part of a 4 piece I – GEN product range (see pages 46/ 47 for female fit), this premium polo and games style short combination meet the demand for new more functional and stylish teamsport , PE and games clothing . Maintaining a more traditional theme but with a fresh design, these garments use the same 180 gramme ultra soft microdot performance polyester knit as the female products in the range, also with quick dry function added. Great attention has been given to fit and quality to ensure these products are fit for purpose.



FABRIC SYMBOLS



MOISTURE CONTROL LIGHTWEIGHT EASY CARE

806 TEAM UNISEX POLO - AVAILABILITY:

AVAILABLE COLOURS	BLACK/RED BLACK/EMERALD BLACK/AMBER BLACK/WHITE BLACK/PURPLE BLACK/SKY NAVY/ AMBER NAVY/WHITE NAVY/SKY NAVY/RED BLACK NAVY													
LABEL SIZE (INCHES)	20/22	24/26	26/28	28/30	30/32	32/34	34/36	36/38	38/40	42/44	46/48	50/52		
CHEST	INCHES (TO FIT)		22	25	26	28	31	33	34	38	40	44	47	50
	CENTIMETRES (TO FIT)		56	62	66	72	78	83	86	97	102	112	120	126

803 TEAM SHORT - AVAILABILITY:

AVAILABLE COLOURS	BLACK BLACK/RED BLACK/EMERALD BLACK/AMBER BLACK/WHITE BLACK/PURPLE BLACK/SKY NAVY/ AMBER NAVY/WHITE NAVY/SKY NAVY/RED BLACK NAVY													
LABEL SIZE (INCHES)	18"	20"	22"	24"	26"	28"	30"	34"	36"	40"	44"	46"		
WAIST	INCHES (TO FIT)		18-20"	20-22"	22-24"	24-26"	26-28"	28-30"	30-34"	34-36"	35-40"	40-44"	44-46"	46-48"
	CENTIMETRES (TO FIT)		46-50	51-55	56-60	61-65	66-70	71-75	76-85	86-90	91-100	101-111	112-116	117-125

718 PREMIUM SQUAD KIT BAG



824 MATCHDAY HOLDALL



NEED TO KNOW

100% high tenacity polyester, highly durable, all components have been carefully selected and tested to ensure they stand up to wear and tear. The design of the bag is also compatible with printing or embroidery. It also has a multitude of features such as internal pocket for valuables, dirty kit and boot storage compartment with separate removable hard base it also benefits from reinforced seams, high quality zip pullers and an adjustable padded shoulder strap. A bag to last.



SIZE & COLOUR:

ONE SIZE	L:50CM x W:29.5cm x H:38cm
COLOUR	BLACK / NAVY

FABRIC SYMBOLS



REINFORCED

NEED TO KNOW

A practical and durable duffel style bag offering something different to regular holdalls, key features include additional strengthening to the base with a sculptured hardboard sewn in to the lining giving the bag a more unique shape. Soft handle heavy duty coated 100% polyester Oxford combined with contrast ripstop panelling. The bag benefits from a generous waterproof internal pocketbag for wetgear, along with heavy duty zips, 2 additional external pockets and padded shoulder strap.



FABRIC SYMBOLS



REINFORCED

SIZE & COLOUR:

ONE SIZE	L:66CM x W:30cm x H:28cm
COLOUR	BLACK / NAVY

258 PRESENTATION TRACKSUIT



466 CLUB MICRO TRACKSUIT

PANTS AVAILABLE SEPARATELY, SEE PAGE STYLE 467 ALL PURPOSE PANTS



NEED TO KNOW

The perfect tracksuit to represent your team, on a tour or in the clubhouse. Water repellent soft handle 105gsm polyester dobby, with soft mesh lining, this tracksuit has lots of extra design detail including high visibility piping trim, velcro cuffs, stylish vents in the knees and shoulders, inner pocket and ankle zips.



AVAILABILITY:

AVAILABLE COLOURS	BLACK / NAVY							
INTERNATIONAL SIZE YEARS	LY 12/13	XLY	S	M	L	XL	XXL	XXXL

FABRIC SYMBOLS



NEED TO KNOW

A basic tracksuit popular with schools and clubs. 125gsm water repellent 100% polyester micro peach outer and lightweight mesh lining, ankle zips and open hem with concealed drawcord. It's a simple style, with a touch of white piping detail on the jacket pocket and chinguard for comfort.



AVAILABILITY:

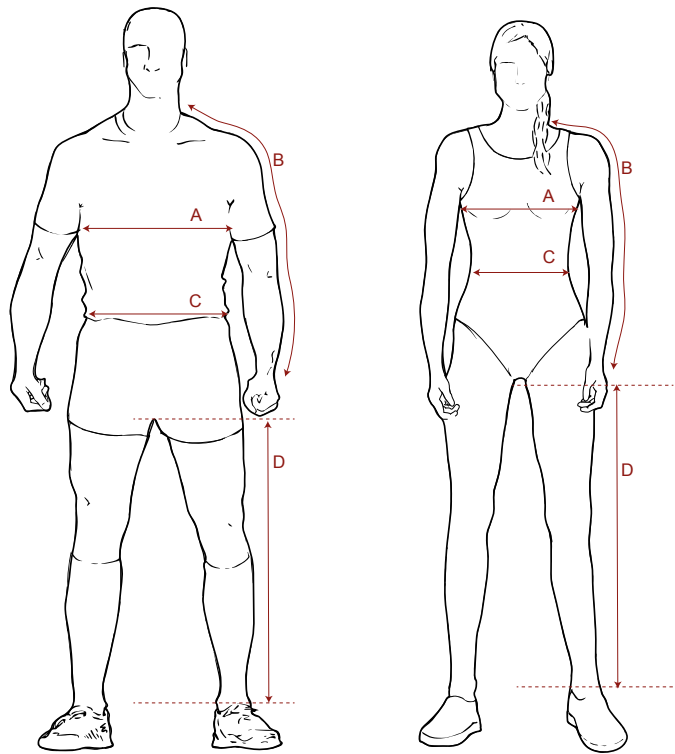
AVAILABLE COLOURS	BLACK / NAVY											
INTERNATIONAL SIZE YEARS	XSY 6/7	SY 8/9	MY 10/11	LY 12/13	XLY	S	M	L	XL	XXL	XXXL	

FABRIC SYMBOLS



SIZE GUIDE

All measurements are intended as an approximate guide only, due to the natural variations found in body proportions and heights within the general population.



INTERNATIONAL SIZE YEARS		XS 6/7	S 8/9	M 10/11	L 12/13	XS	S	M	L	XL	2XL	3XL
A. CHEST	INCHES (TO FIT) CENTIMETRES (TO FIT)	24/26 61/66	26/28 66/71	28/30 71/76	30/32 76/81	32/34 81/86	34/36 86/91	38/40 97/102	42/44 107/112	46 117	48 122	50 127
B. OVERARM	INCHES (TO FIT) CENTIMETRES (TO FIT)	21 53	22 56	23.5 60	25 64	27 69	29 74	32 81	32.5 83	33.5 85	34 86	34.25 87
C. WAIST	INCHES (TO FIT) CENTIMETRES (TO FIT)	20/22 51/56	22/24 56/61	24/26 61/66	26/28 66/71	28/30 71/76	30/32 76/81	32/34 81/86	36/38 91/97	40 102	42 107	44 112
D. INSIDE LEG	INCHES (TO FIT) CENTIMETRES (TO FIT)	18.5 47	20.5 52	23 59	25.5 65	27 69	29 74	30.5 77	31 79	32 81	32.5 83	33.5 85

0704 WOMANS FIT TRAINING PANT

INTERNATIONAL SIZE	11-12YRS	13-14YRS	6	8	10	12	14	16
WAIST INCHES (TO FIT)	25	27	24	26	28	30	32	34
WAIST CM (TO FIT)	63	69	62	67	72	77	82	87
INSIDE LEG LENGTH INCHES	27.5	30	30	30	31	31	31	31
INSIDE LEG LENGTH CM (ACTUAL)	70	76	76	76	78.5	78.5	78.5	78.5

0543 SKORT

INTERNATIONAL SIZE	5-6YRS	7-8YRS	9-10YRS	11-12YRS	13-14YRS	6	8	10	12	14	16
WAIST INCHES (TO FIT)	21.5	23	25.5	27	28	23	25	27	29	31	33
WAIST CM (TO FIT)	55	59	65	69	71	59	64	69	74	79	84
SKORT LENGTH INCHES	10	11	12	13	13	12.5	13	13.5	14	14.5	15
SKORT LENGTH CM (ACTUAL)	25	28	31	32.5	33	31.5	33	34	35	36.5	38

0799 POWER STRETCH LEGGING

INTERNATIONAL SIZE	6/7YRS	8/9YRS	10/11YRS	12/13YRS	6-8	10-12	14	16	18
WAIST INCHES (TO FIT)	20	21	23	24	26	28	31	34	37
WAIST CM (TO FIT)	50	53	58	62	67	71	79	87	95
INSIDE LEG LENGTH INCHES	22	23	24	25	25	25.5	26	26	26.5
INSIDE LEG LENGTH CM (ACTUAL)	55.5	58.5	61	63	64	65	66	67	68

TECHNICAL PERFORMANCE GUIDE



BREATHABLE



WIND RESISTANT



WATERPROOF



THERMAL BALANCE



MOISTURE CONTROL



TAPED SEAMS



LIGHTWEIGHT



SHOWERPROOF



WARMTH



REINFORCED



EASY CARE



ACCESS ZIP



Filmed on location at:

Alderley Edge Cricket Club
Moss Lane, Alderley Edge
Cheshire, SK9 7HN